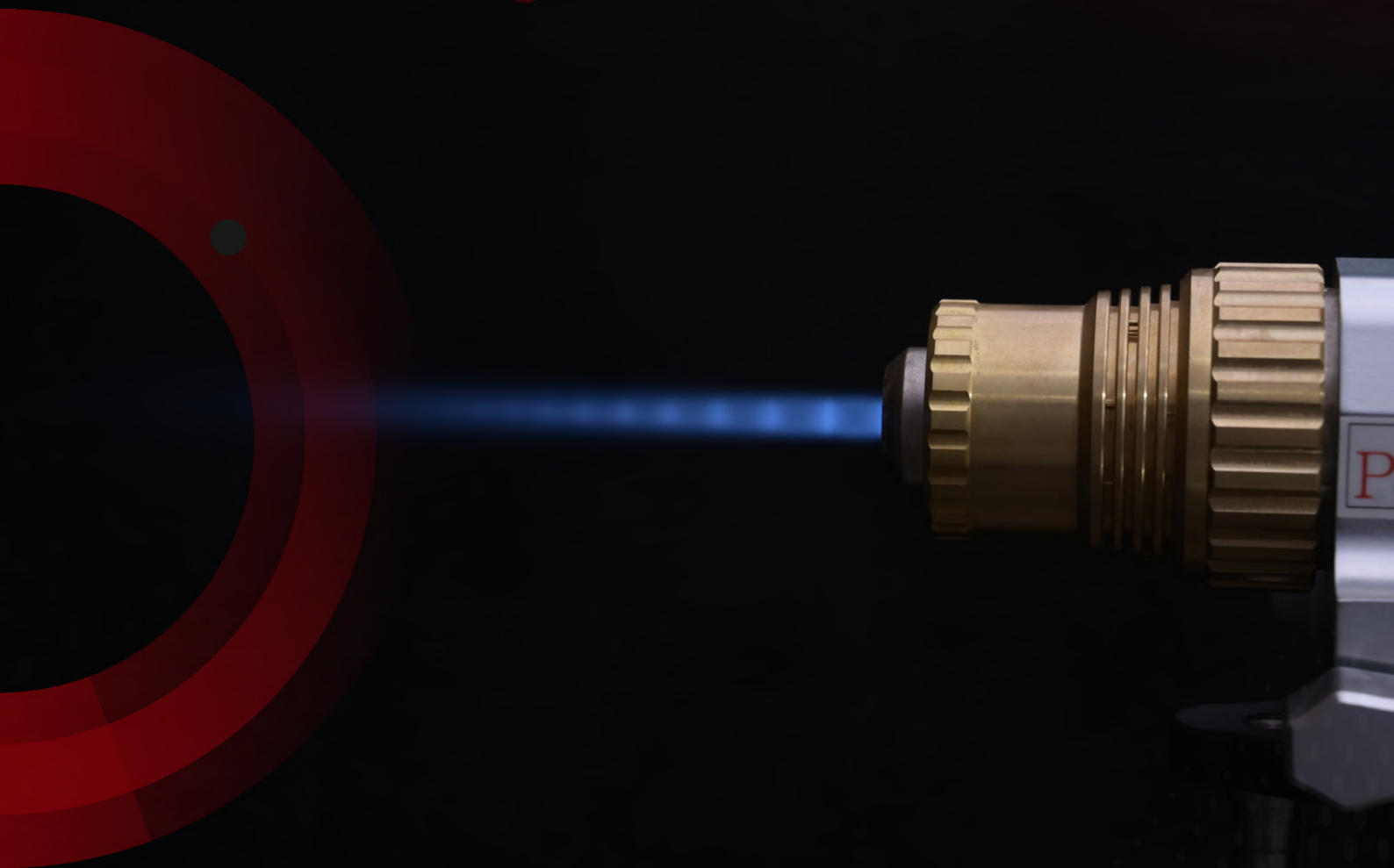




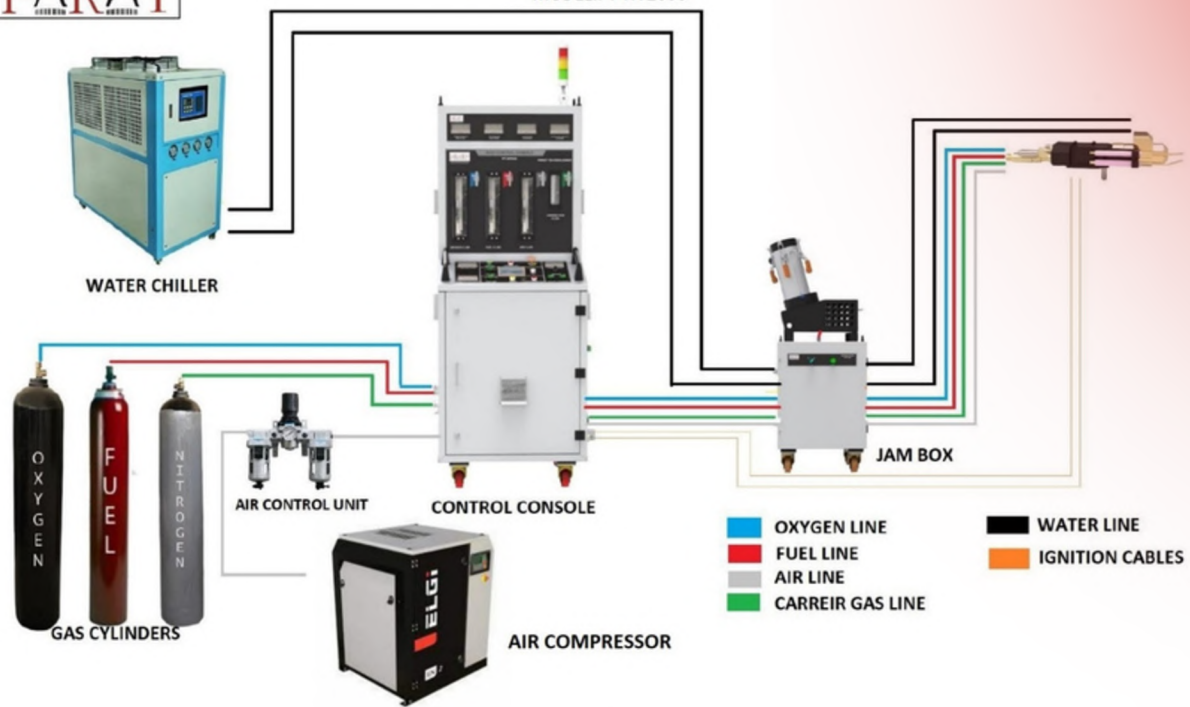
HVOF COATING



www.parattech.com



HVOF-PANEL LINE ARRANGEMENT MODEL:PT-HV2600



HVOF SPRAY COATING SYSTEM - HYDROGEN & LPG FUEL OPTIONS

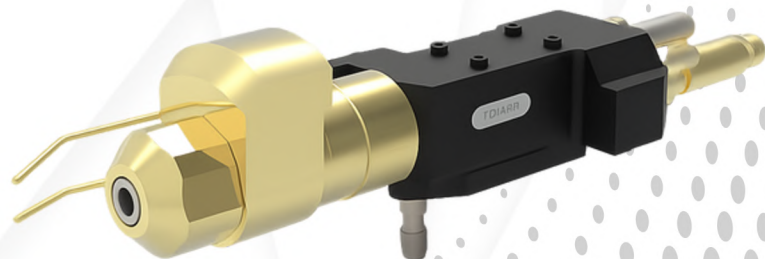
Spray System Consists of Our HVOF Following

1. HVOF SPRAY TORCH MODEL # PT-HV2600 A - FUEL LPG & HYDROGEN GAS WITH WATER COOLED JACKET
2. CONTROL CABINET (PLC CONTROL, ANALOG QUANTITY CONTROL MODULE, TOUCH SCREEN, SENSORS & VALVES ETC.)
3. HOSE KIT
4. MOVABLE POWDER FEEDER SET UP 3350 CC CAPACITY (DOUBLE HOPPER)
5. AIR CONTROL UNIT
6. GAS CONTROL UNIT
7. PORTABLE TROLLEY
8. WATER JAM BOX
9. PERSONAL PROTECTIVE EQUIPMENT

Description of each component is as below :-

1. HVOF SPRAY TORCH MODEL # PT-HV2600 A - FUEL LPG & HYDROGEN GAS WITH WATER COOLED JACKET

- 2.0 KG Light weight spray gun
- Fuel - LPG & Hydrogen
- 1500-2000 m/sec Flame Speed
- 3000-3200 °C Flame Temperature
- Spray Rate: 0-10 kg/h
- Powder Particle Impact Velocity: 600-1200 m/sec
- Coating Bond Strength: ≥ 70 Mpa
- Recommended Powder Particle Size: 10-60 μm
- Torch Cooling: Water Cooled
- Cooling Water Flow: 2-3 m^3/h
- Suitable for Machine mounted & Hand spray coating works
- Oxygen & Fuel Non Return Valves (German/USA Make) ensures safe operation



2. CONTROL CABINET (PLC CONTROL, ANALOG QUANTITY CONTROL MODULE, TOUCH SCREEN, SENSORS & VALVES ETC.)

- Calibrated flow tubes for all gases
- Panel mounted on trolley with castor wheel - easy to move
- PLC controlled
- Check valves for Fuel & Oxygen makes operation safe
- Precise flow control needle valves
- All the required safety interlocks given in this system
- Alarm/Faults shown in HMI screen
- Water Flow Sensor, Gases Pressure Sensor, Temperature Sensor etc. Provided in this control console
- Auto & Manual Modes given for equipment operation
- Powder Feeding & water chiller unit is integrated with this operator console
- Oxygen Gas Flow Range: 250-280 SLPM
- Fuel Gas Flow Range: 400-800 SLPM
- Air Flow Range: 350-500 SLPM
- Oxygen Gas Pressure Range: 0-21 kg/cm²
- Fuel Gas Pressure Range: 0-10 kg/cm²
- Air Pressure Range: 0-10 kg/cm²
- Power Input: 220V/1P



3. HOSE KIT



- Reliable Quality
- Enough flexibility
- Can withstand pressure upto required limits

4. MOVABLE POWDER FEEDER SET UP 3350 CC CAPACITY (DOUBLE HOPPER OPTION)

Powder Feeder works on pressurization & constant volumetric feed principal. It has an variable AC Drive fitted with digital RPM display. During operation, the powder is gravity fed into the slots of the rotating disk through which controlled quantity of the powder is pushed into the powder feed hose by the carrier gas. The powder feed rate is directly proportional to the powder disc RPM which can be controlled by a port on the front panel. The canister can withstand a back pressure of 10 bar.

Features :

- Digital Display
- Remote or local powder feed control selectable
- Can be used with flame spray, hvof & plasma spray torches
- Powder canister pressure gauge
- Safety valve to release high canister pressure
- Carrier gas flow can be adjusted from gas control console
- Input: 220V/50Hz
- Feed Rate: 3-15 L/Min
- Feed Speed: 0-250 gm/min (adjustable)



5. AIR CONTROL UNIT



- Pressure Regulator Given
- Outlet Pressure Gauge Given
- Air Filter Given
- Moisture Separator Given
- Wall Mounting Possible
- Manual Moisture Release Valve Given
- Air Pressure Capacity: 0-10 kg/cm²

6. GAS CONTROL UNIT



- German make Oxygen, Hydrogen & Carrier Gas regulator
- Indian Make LPG Gas regulator
- Double Stage regulators
- Precise pressure control
- Inlet & Outlet pressure gauges provided
- Designed in accordance to internationally recognized standards EN ISO, BSP, CGA, NFE
- 100% Quality Assurance Testing
- Heavy Duty, Durable Construction
- Stainless Steel Diaphragm
- Fire-Retardant Valve Seat Material

7. PORTABLE TROLLEY

- Portable Trolley for tools and spare Parts Handling
- Powder Feeder Mounted on a portable Trolley
- Control Console of HVOF is Mounted on Portable Caster Trolley Base

8. WATER JAM BOX

- For Integration of Water Chiller with HVOF equipment water jam box is provided
- Equipped with temperature sensor & water flow sensor
- Ensures cool water circulation in the hvof spray torch as safety interlocks through PLC
- Water flow: 2-3 m³/h



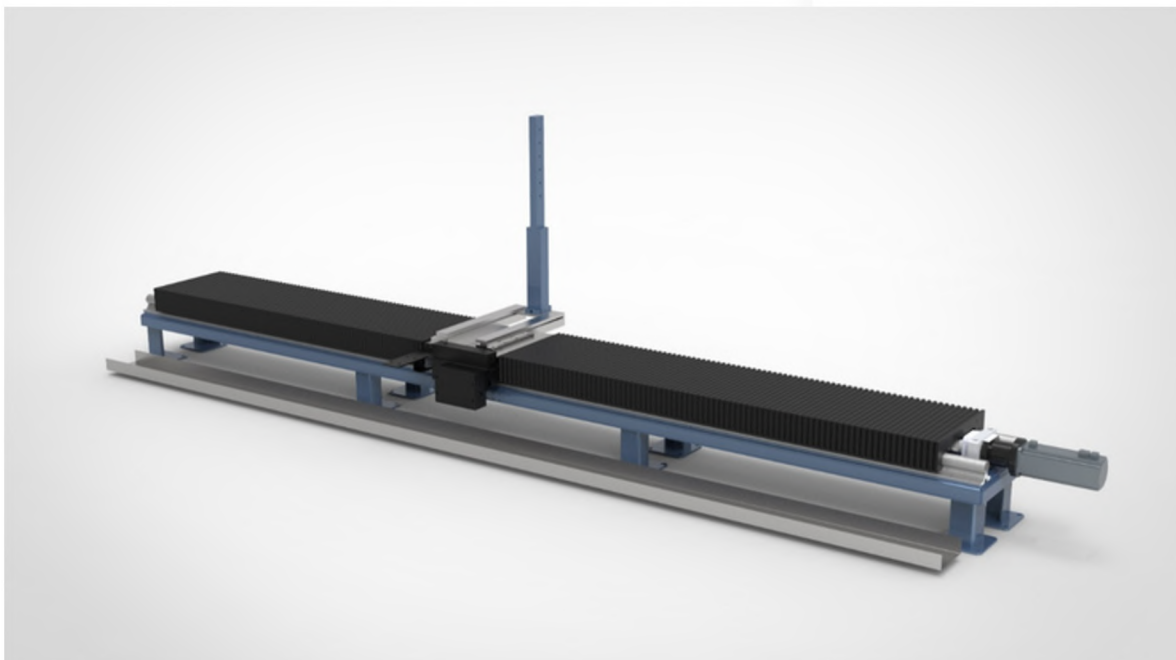
8. PERSONAL PROTECTIVE EQUIPMENT



Process of metal spray will always have dust & sound so it is very necessary to provide personal protective equipment to operator. Parat Technologies along with 6PT-II spray system supply a set of personal protective equipment which include -

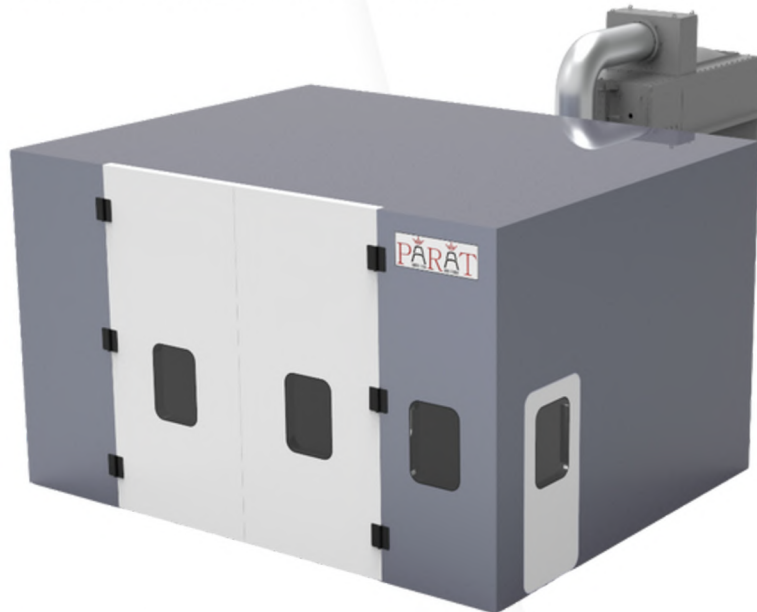
Mask, Goggle, Hand Gloves, Ear Muff

X-Y MANIPULATOR 1000X500 MM



- X axis movement with ball screw/Chain Sprocket using Servo Motor
- Y axis movement with ball screw/Chain Sprocket using Servo motor
- Siemens make Limit switches
- MS powder coated base structure
- Bellow covering basic structure
- Maximum movement on X and Y axis 1000 mm x 500 mm
- Movement: Zig-Zag Type
- Drive For X-Slide: ≥ 0.5 HP
- Drive For Y-Slide: ≥ 0.5 HP

ACOUSTIC CHAMBER 3200X2700X3000 MM WITH DUST COLLECTOR



- Model # PT-322730AC
- Internal Sizes: 3200 (W) x 2700 (D) x 3000 (H) mm
- With Hinged 02 nos. Main Front Doors for Job Entry
- 01 no. Small main door provided for entry inside the room for operator
- Modular design for easier on-site installation
- 100 mm thick acoustic walls filled with inert, non-combustible & vermin proof mineral wool
- 1.5 mm steel sheet as outer wall
- 18 gauge galvanized perforated steel sheet with 3 mm diameter holes as inner wall
- 14 Gauge steel channel used for stiffeners
- Joints are welded & bolted

- 80 kg/m³ mineral wool density will be used
- Acoustic absorbing material covered with high temperature resistant fiber glass cloth
- Doors are fitted with EPDM Gaskets & Pressure Lock to close tightly to avoid noise leakage from door frame
- Vision Glass: Soundproof vision glass to monitor the process from outside, vision glass made up of 6 mm thick toughened glass with 15 mm air gap filled with argon gases, qty. 02 nos.
- Lights Inside: LED light inside the booth are installed for clear vision, 08 nos. of LED lights provided inside
- Hardware: Heavy Duty SS Hinges & Heavy Duty Spring-Loaded Brass Locks,
- Sprayhood of SS with Lovers suitable for HVOF application
- MS Ducts - Primer + PU Painted of maximum 3-meter distance from booth
- Dust collector with ~11000 Am³/hr Extraction Air Flow
- Filter Media - Nano fiber flame resistant media
- Filter Cleaning Arrangement: Automatic sequential reverse cleaning pulse jet
- Easier filter replacements
- MOC Hopper & Casing: Mild steel as per IS 2062
- Mild steel/Aluminum casing & impeller
- Centrifugal backward curved impeller
- Motor: ≥22 KW/2 pole Induction motor ABB/Simens Make
- Input: 415V/3P/50Hz
- Heavy duty MS structure with welded & bolted joints
- Acoustic Booth Modular panels are coated with primer & PU Paint (Asian Paint Make)
- Dust Collector structure is coated with primer & PU Paint (Asian Paint Make)

ACOUSTIC CHAMBER 3200X2700X3000 MM WITH DUST COLLECTOR



Model	EQ 11-8 400V/50HZ
Capacity (free air delivery)	60 cfm
Maximum working pressure	8.5 kg/cm ²
Normal working pressure	8.0 kg/cm ²
No. of stages	Single
Cooling system	Air Cooled
Main motor	15 hp, Sq. cage induction motor, TEFC type, suitable for operation on 400V, 3ph., 50 Hz, AC supply, F class insulation with IP55 deg. of protection
Starter	Star Delta
Dimensions in mm	1356x721x1220.(Length X Breadth X Height) (approx.)
Weight of the package	568 Kg (approx.)

WATER CHILLER FOR HVOF TORCH COOLING



CAPACITY	2.4 Tr @ 12 degree C evaporating temperature & 52 degree C condensing temperature
CONTROLLER	Microprocessor - Dixell Ichill (Italy)
COMPRESSOR	Hermetic - Copeland or Equivalent
TANK	Inbuilt SS Tank Having Capacity of 30 Ltrs, Duly Insulated
PUMP	Provided / 1 hp / 3 m ³ /h @ 3.7 Bar
CONTACTORS	Schneider
OVERLOAD RELAY	Provided for Compressor & Pump
ALARM BUZZER	Provided
FABRICATION	Painted CRCA Lockable Panels
CASTORS	Provided

Contact Information



Phone Number

+91-9782690993



Website

www.parattech.com



Email

info@parattech.com



Corporate Office & Plant

Plot No. 168, santosh nagar, khasra
number 173 Pal Boranada road,
Jodhpur, Rajasthan 342012



Branch Office

Mumbai & Bangalore

PARAT TECHNOLOGIES